

PPUH AUTO-HAK Sp.J.

Henryk i Zbigniew Nejman
ul. Słoneczna 16K 76-200 SŁUPSK
POLAND

tel/fax +48 59 8 414 414; +48 59 8 414 413

e-mail: office@autohak.com.pl

www.autohak.com.pl



AUTO-HAK



**SAAB 9-5
4D, KOMBI**

Cat. no:

SA02



07.1997 → 06.2011

e20

e20*94/20*1421*00

D

10,32 kN



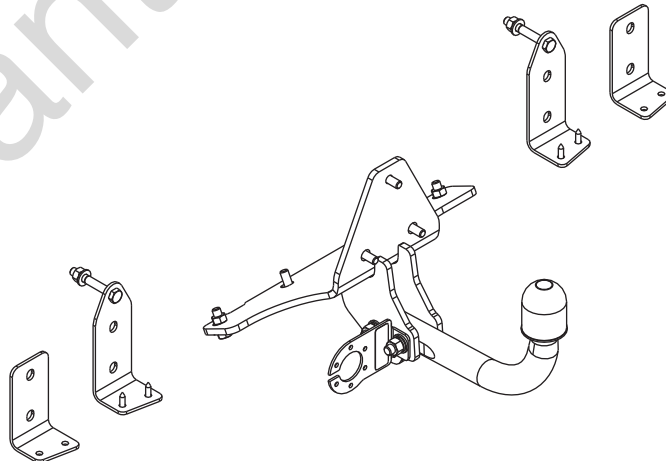
2h



R=1800 kg



S=75 kg



M6 - 11 Nm
M10 - 50 Nm
M14 - 138 Nm

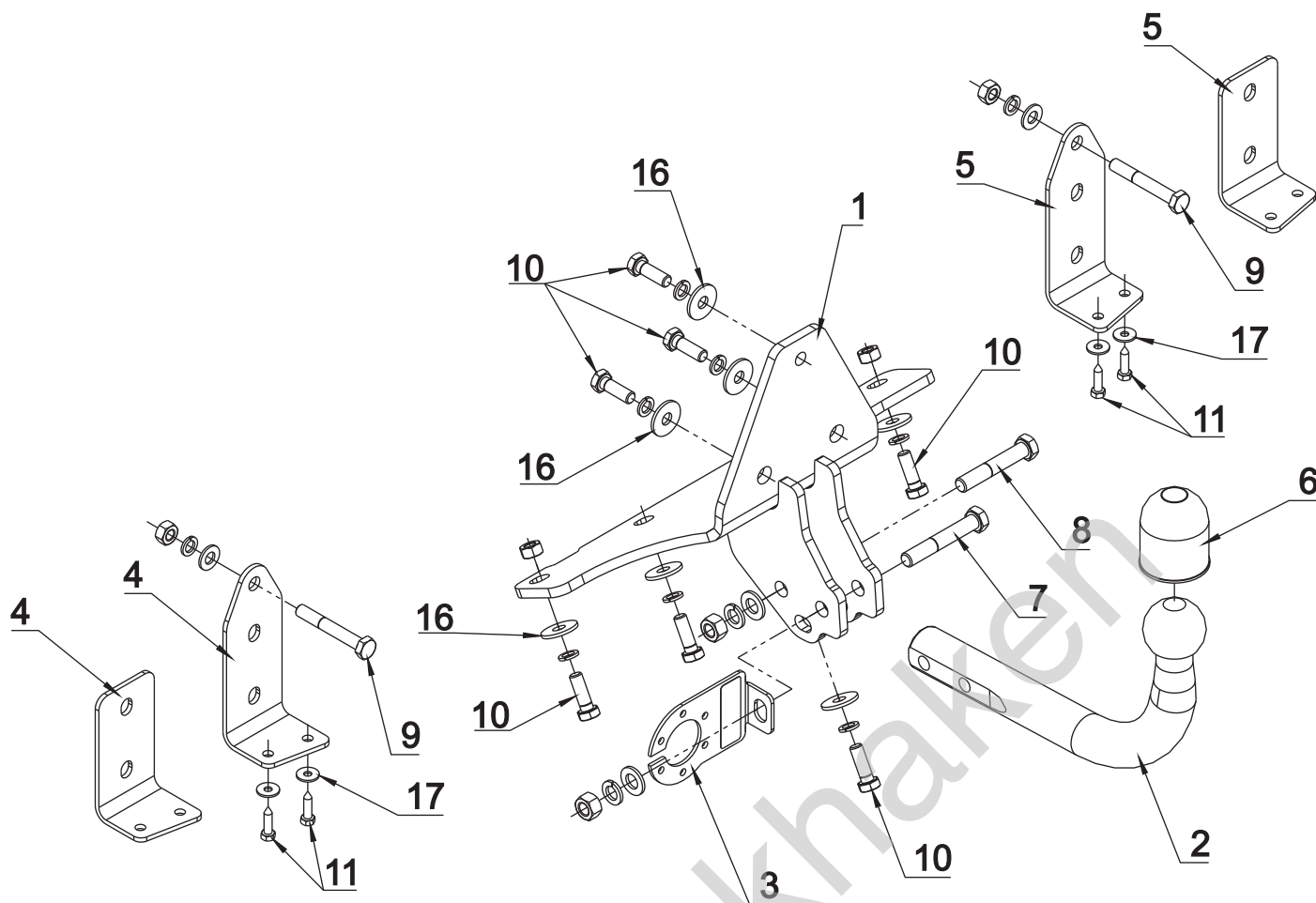
M8 - 25 Nm
M12 - 87 Nm
M16 - 210 Nm

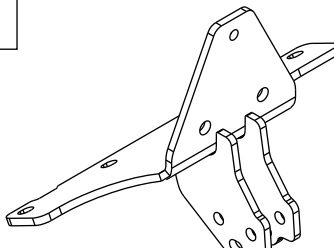

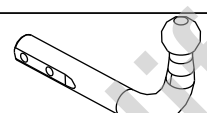

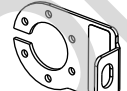






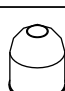



0 km →



1000 km



1 	x 1		7 M12x75	x 1
			8 M12x70	x 1
			9 M10x70	x 2
			10 M10x30	x 7
			11 M6x25	x 4
2 	x 1 Art.nr-KL1SA02			
3 	x 1 Art.nr-BL1SA02		12 M12	x 2
			13 M10	x 4
4 SEDAN   KOMBI	x 1+1		14 \varnothing 13	x 2
			15 \varnothing 10.5	x 2
5 SEDAN   KOMBI	x 1+1		16 \varnothing 30x \varnothing 10.5x2.5 10 – DIN 9021	x 7
6 	x 1		17 \varnothing 18x \varnothing 6.4x1.6 6 – DIN 9021	x 4
			18 \varnothing 12.2	x 2
			19 \varnothing 10.2	x 9

